

Sensor

Optional photo sensors and proximity sensors are available for SKR models.

[Example of Installation]

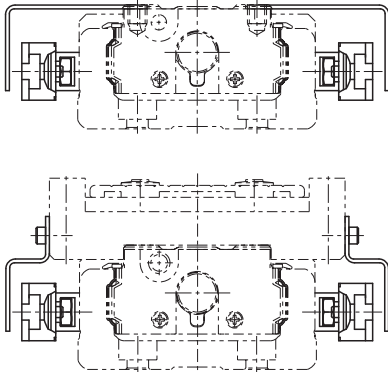


Table15 With/without a sensor

Symbol	Description	Type	Accessory *1
0	None	—	—
1	With sensor rail	—	Mounting screws, sensor rail
2	Photo sensors ^{*2} (3 units)	EE-SX671 (Omron Corp.)	Mounting screw/nut, detecting plate, sensor rail, mounting plate, connector (EE-1001)
6	Photo sensors ^{*2} (3 units)	EE-SX674 (Omron Corp.)	Mounting screw/nut, detecting plate, sensor rail, mounting plate, connector (EE-1001)
7	Proximity sensors N.O. contact (3 units)	APM-D3A1-001 (Azbil Corp.)	Mounting screw/nut, detecting plate, sensor rail
B	Proximity sensors N.C. contact (3 units)	APM-D3B1-003 (Azbil Corp.)	Mounting screw/nut, detecting plate, sensor rail
E	Proximity sensors N.O. contact (1 unit) N.C. contact (2 units)	APM-D3A1-001 APM-D3B1-003 (Azbil Corp.)	Mounting screw/nut, detecting plate, sensor rail
H	Proximity sensors N.O. contact (3 units)	GX-F12A (Panasonic Industrial Devices SUNX Co., Ltd.)	Mounting screw/nut, detecting plate, sensor rail
L	Proximity sensors N.C. contact (3 units)	GX-F12B (Panasonic Industrial Devices SUNX Co., Ltd.)	Mounting screw/nut, detecting plate, sensor rail
J	Proximity sensors N.O. contact (1 unit) N.C. contact (2 units)	GX-F12A GX-F12B (Panasonic Industrial Devices SUNX Co., Ltd.)	Mounting screw/nut, detecting plate, sensor rail
M	Proximity sensors N.O. contact (1 unit) N.C. contact (2 units)	GX-F12A-P GX-F12B-P (Panasonic Industrial Devices SUNX Co., Ltd.)	Mounting screw/nut, detecting plate, sensor rail

N.O. contact: normally open contact

N.C. contact: normally closed contact

*1 If the stroke is less than 70 mm, 2 sensor flags and 2 sensor rails will be included. SKR20 and 26 ship with the sensor rail already installed.

*2 The photo-sensors can be switched between ON when lit and ON when unlit.

[Proximity Sensor]

APM-D3A1-001 (Azbil Corp.) 3 units

APM-D3B1-003 (Azbil Corp.) 3 units

GX-F12A (Panasonic Industrial Devices SUNX Co., Ltd.) 3 units

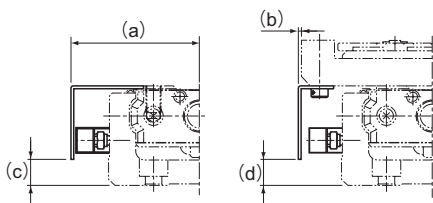
GX-F12B (Panasonic Industrial Devices SUNX Co., Ltd.) 3 units

GX-F12A-P (Panasonic Industrial Devices SUNX Co., Ltd.) 3 units

GX-F12B-P (Panasonic Industrial Devices SUNX Co., Ltd.) 3 units

● Proximity Sensor: APM-D3A1-001 APM-D3B1-003 (Azbil Corp.)

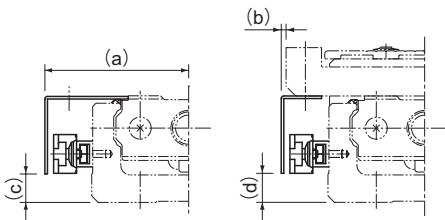
Unit: mm



Model No.	a	b	c	d
SKR20	32.5	6.6	6	6
SKR26	37.5	6.4	8	8
SKR33	43	0.3	14.8	15
SKR46	56.2	0.2	26.8	22
SKR55	62.4	0.4	22	22
SKR65	77.4	-7.6	25.1	25

● Proximity sensor GX-F12A GX-F12B GX-F12A-P
GX-F12B-P (Panasonic Industrial Devices SUNX Co., Ltd.)

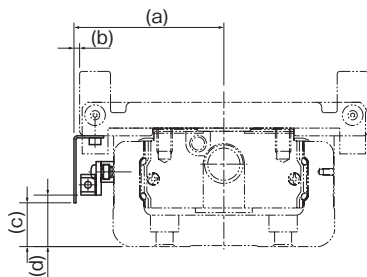
Unit: mm



Model No.	a	b	c	d
SKR20	34	8.1	3.6	4
SKR26	39	7.9	6	6
SKR33	44.7	2	13.8	15
SKR46	57.7	1.8	24.8	22
SKR55	64.5	2.5	22	22
SKR65	79	-6	25.1	25

● Proximity Sensor (with Bellows)

Unit: mm



Model No.	a	b	c	d	Sensor type
SKR33	47	4	8	6	GX-F12 (Panasonic Industrial Devices SUNX Co., Ltd.)
SKR46	59.8	3.8	15	15	
SKR33	45.3	2.3	10	11	APM-D3 (Azbil Corp.)
SKR46	56.2	0.2	22	25	

[Photo Sensor]

EE-SX671 (Omron Corp.) 3 units

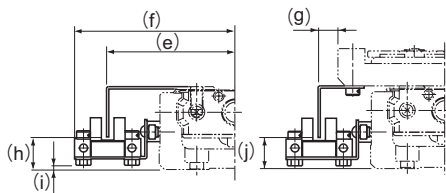
EE-SX674 (Omron Corp.) 3 units

Connector EE-1001 (Omron Corp.) 3 units

(Note) The connector is an appended article.

● **Photo Sensor: EE-SX671 (Omron Corp.)**

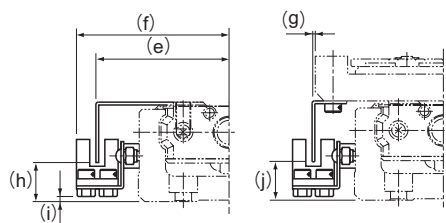
Unit: mm



Model No.	e	f	g	h	i	j
SKR20	41	53.8	15	9.4	0.9	9.5
SKR26	45.9	58.7	14.9	11.4	2.9	11.5
SKR33	51.1	63.6	8.3	18.8	7.4	19.5
SKR46	64.1	76.6	8.3	29.8	16.4	26.5
SKR55	70.7	83.5	8.6	24.5	13.6	25
SKR65	85.5	98.5	0.6	28.1	16.6	28

● **Photo Sensor: EE-SX674 (Omron Corp.)**

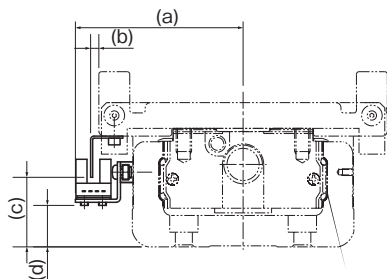
Unit: mm



Model No.	e	f	g	h	i	j
SKR20	38.3	44.8	12.5	10.9	0.6	11
SKR26	43.3	49.7	12.5	12.9	2.6	13
SKR33	45.9	52.1	3.3	17.8	7.1	20
SKR46	58.9	65.1	3.2	28.8	16.1	27
SKR55	63.5	70.5	1.5	24.5	13.1	24
SKR65	79	85.5	-6	28.6	16.1	28

● **Photo Sensor (with Bellows)**

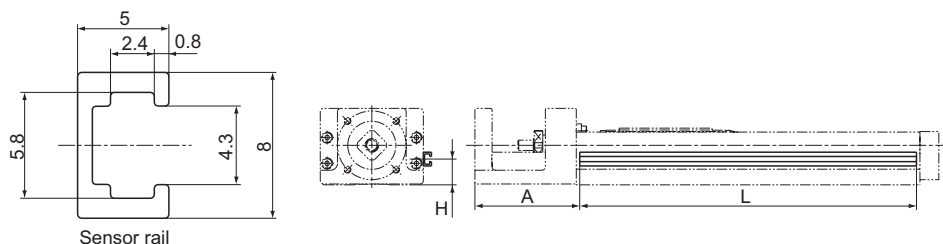
Unit: mm



Model No.	a	b	c	d	Sensor type
SKR33	63.6	8.3	19.5	7.4	EE-SX671 (Omron Corp.)
SKR46	76.6	8.3	26.5	16.4	
SKR33	52.1	3.3	18	5.1	EE-SX674 (Omron Corp.)
SKR46	65.1	3.2	27	16.1	

[Sensor Rail]

The sensor rail can be attached alone.



Unit: mm

Model No.	Stroke*	Outer rail length	H	A	L
SKR20	30	100	10	43	111
	80	150			161
	130	200			211
SKR26	60	150	12	54	161
	110	200			211
	160	250			261
	210	300			311
SKR33	45	150	20	61	146
	95	200			196
	195	300			296
	295	400			396
	395	500			496
	495	600			596
SKR46	190	340	29	89.5	336
	290	440			436
	390	540			536
	490	640			636
	590	740			736
	690	840			836
SKR55	790	940	27	96	936
	800	980			976
	900	1080			1076
	1000	1180			1176
	1100	1280			1276
SKR65	1200	1380	30	102	1376
	790	980			976
	990	1180			1176
	1190	1380			1376
	1490	1680			1676

*Indicates stroke length when one long-type inner block is incorporated.